

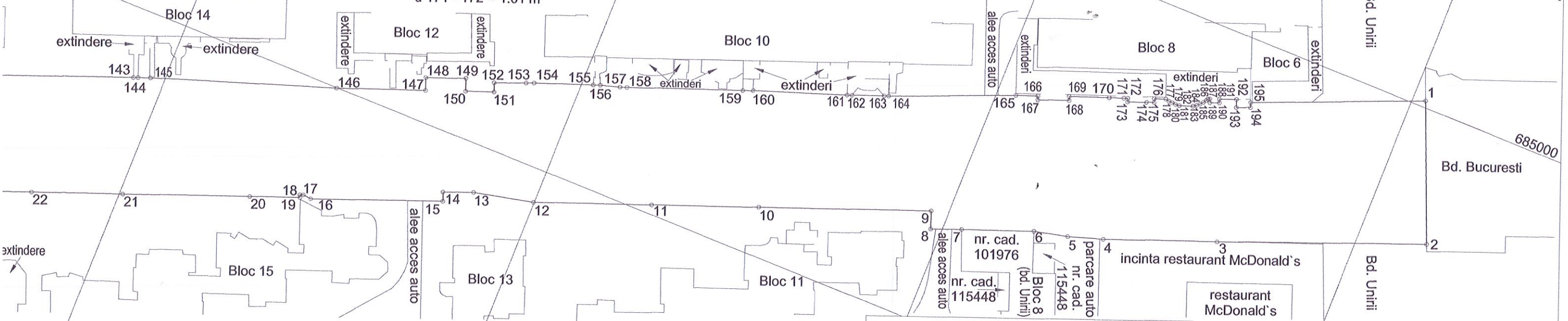
ANEXA 2 LA HCL Nr. / 2018.

Plan de amplasament si delimitare a imobilului  
Scara 1:1000

Nr. cadastral	Suprafata masurata, [mp]	Adresa imobilului
	50320	Mun. Baia Mare, bd. Bucuresti, jud. Maramures
Nr. Cartea Funciara		Unitatea Administrativ Teritoriala (UAT)
		BAIA MARE

- d 129 - 130 = 38.71 m
- d 130 - 131 = 36.40 m
- d 131 - 132 = 44.84 m
- d 132 - 133 = 11.01 m
- d 133 - 134 = 1.17 m
- d 134 - 135 = 14.01 m
- d 135 - 136 = 9.19 m
- d 136 - 137 = 9.08 m
- d 137 - 138 = 57.31 m
- d 138 - 139 = 8.27 m
- d 139 - 140 = 8.47 m
- d 140 - 141 = 52.89 m
- d 141 - 142 = 7.54 m
- d 142 - 143 = 70.12 m
- d 143 - 144 = 1.16 m
- d 144 - 145 = 3.16 m
- d 145 - 146 = 48.14 m
- d 146 - 147 = 22.91 m
- d 147 - 148 = 3.29 m
- d 148 - 149 = 10.32 m
- d 149 - 150 = 3.29 m
- d 150 - 151 = 7.26 m
- d 151 - 152 = 2.33 m
- d 152 - 153 = 8.26 m
- d 153 - 154 = 2.05 m
- d 154 - 155 = 15.21 m
- d 155 - 156 = 1.76 m
- d 156 - 157 = 5.14 m
- d 157 - 158 = 1.80 m
- d 158 - 159 = 29.71 m
- d 159 - 160 = 2.64 m
- d 160 - 161 = 24.19 m
- d 161 - 162 = 1.33 m
- d 162 - 163 = 8.31 m
- d 163 - 164 = 1.15 m
- d 164 - 165 = 32.93 m
- d 165 - 166 = 5.66 m
- d 166 - 167 = 1.02 m
- d 167 - 168 = 8.07 m
- d 168 - 169 = 1.03 m
- d 169 - 170 = 10.34 m
- d 170 - 171 = 3.74 m
- d 171 - 172 = 1.01 m
- d 172 - 173 = 0.94 m
- d 173 - 174 = 4.88 m
- d 174 - 175 = 1.96 m
- d 175 - 176 = 0.93 m
- d 176 - 177 = 2.98 m
- d 177 - 178 = 0.96 m
- d 178 - 179 = 0.94 m
- d 179 - 180 = 0.95 m
- d 180 - 181 = 1.02 m
- d 181 - 182 = 3.54 m
- d 182 - 183 = 0.99 m
- d 183 - 184 = 0.93 m
- d 184 - 185 = 0.94 m
- d 185 - 186 = 0.93 m
- d 186 - 187 = 0.61 m
- d 187 - 188 = 0.49 m
- d 188 - 189 = 0.98 m
- d 189 - 190 = 2.44 m
- d 190 - 191 = 0.98 m
- d 191 - 192 = 4.34 m
- d 192 - 193 = 2.07 m
- d 193 - 194 = 3.69 m
- d 194 - 195 = 1.28 m
- d 195 - 1 = 45.11 m

- d 1 - 2 = 36.70 m
- d 2 - 3 = 54.01 m
- d 3 - 4 = 29.36 m
- d 4 - 5 = 9.17 m
- d 5 - 6 = 8.84 m
- d 6 - 7 = 18.60 m
- d 7 - 8 = 8.00 m
- d 8 - 9 = 4.61 m
- d 9 - 10 = 44.59 m
- d 10 - 11 = 27.48 m
- d 11 - 12 = 30.33 m
- d 12 - 13 = 15.61 m
- d 13 - 14 = 7.89 m



A. Date referitoare la teren			
Nr. parcela	Categorie de folosinta	Suprafata [mp]	Mentiuni
1	DR	50320	Intravilan.
TOTAL		50320	Bulevardul Bucuresti, tronson 2.
B. Date referitoare la constructii			
Cod constructie	Destinatia	Supraf. constr. la sol, [mp]	Mentiuni
-	-	-	-
TOTAL		-	-

Suprafata totala masurata a imobilului = 50320 mp  
Suprafata din act = 50320 mp

Executant ..... S.C. TOPO EXPERT S.R.L.  
ing. Ardelean Vasile Alexandru

Inspector  
Confirm introducerea imobilului in baza de date integrata si atribuirea numarului cadastral

Confirm executarea masuratorilor la teren si corectitudinea intocmirii documentatiei cadastrale si corespondenta acestora cu realitatea din teren

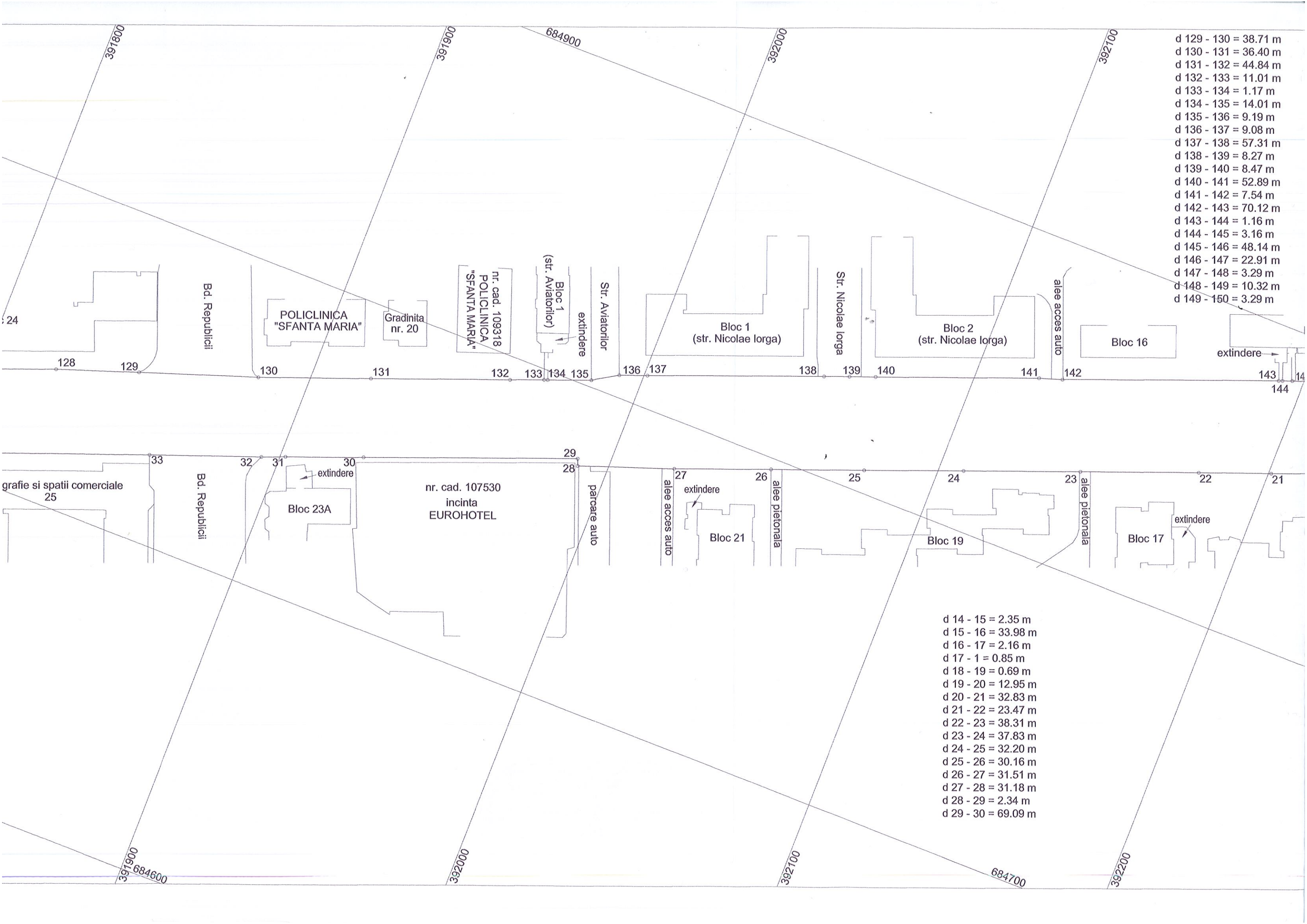
Semnatura si stampila

MINISTERUL ADMINISTRATIILOR INTERIORE  
DEPARTAMENTUL CADASTRAL  
SERVICIUL DE CADASTRU  
AUTORIZARE DE EXECUTARE  
Seria RO-B-F, Nr. 1294  
ARDELEAN VASILE-ALEXANDRU  
Clasa II  
S.C. TOPO EXPERT S.R.L.  
A.N.C.P.I.

Semnatura si parafa

Stampila BCPI

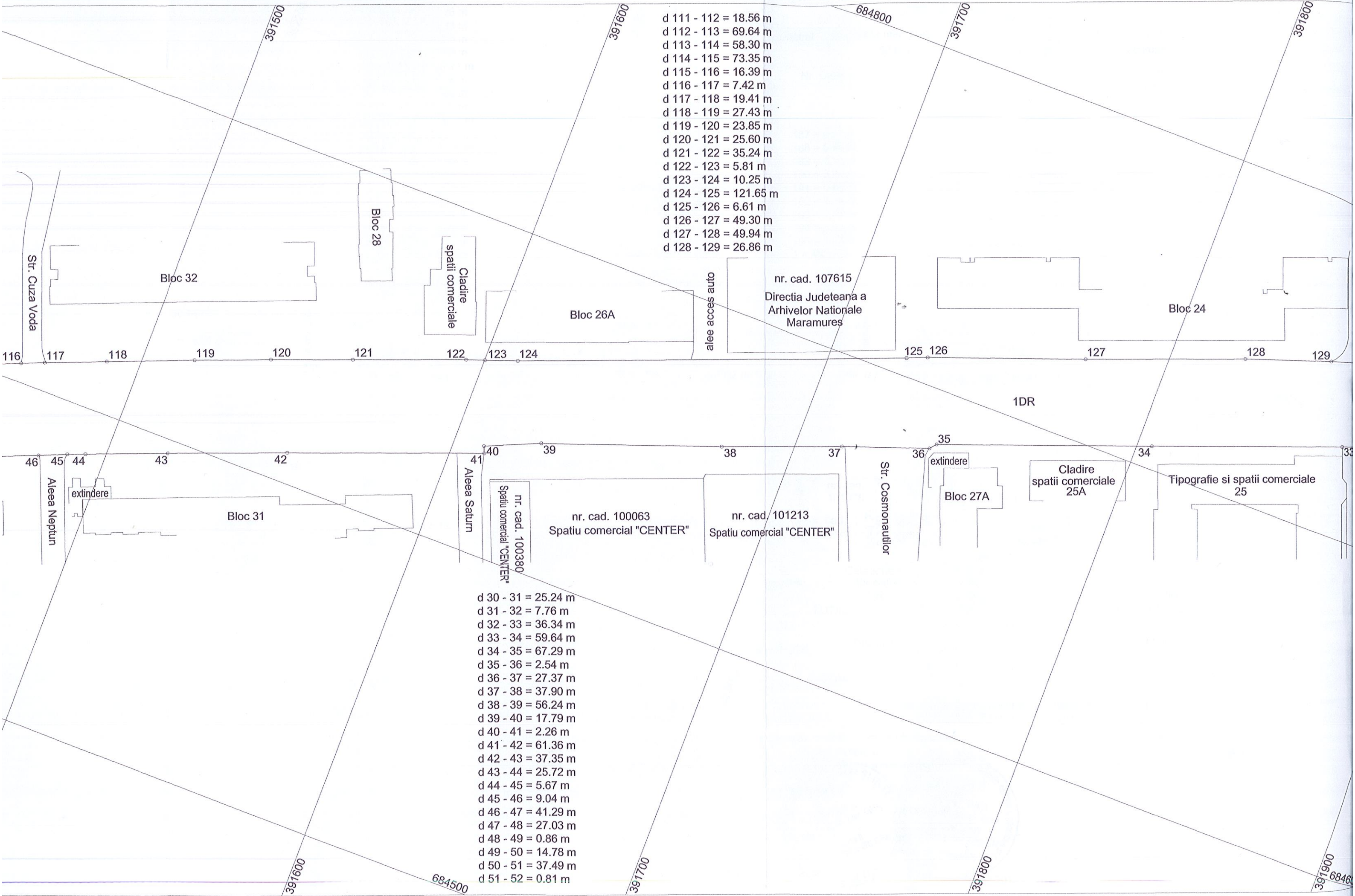
Data: 22.02.2018



- d 129 - 130 = 38.71 m
- d 130 - 131 = 36.40 m
- d 131 - 132 = 44.84 m
- d 132 - 133 = 11.01 m
- d 133 - 134 = 1.17 m
- d 134 - 135 = 14.01 m
- d 135 - 136 = 9.19 m
- d 136 - 137 = 9.08 m
- d 137 - 138 = 57.31 m
- d 138 - 139 = 8.27 m
- d 139 - 140 = 8.47 m
- d 140 - 141 = 52.89 m
- d 141 - 142 = 7.54 m
- d 142 - 143 = 70.12 m
- d 143 - 144 = 1.16 m
- d 144 - 145 = 3.16 m
- d 145 - 146 = 48.14 m
- d 146 - 147 = 22.91 m
- d 147 - 148 = 3.29 m
- d 148 - 149 = 10.32 m
- d 149 - 150 = 3.29 m

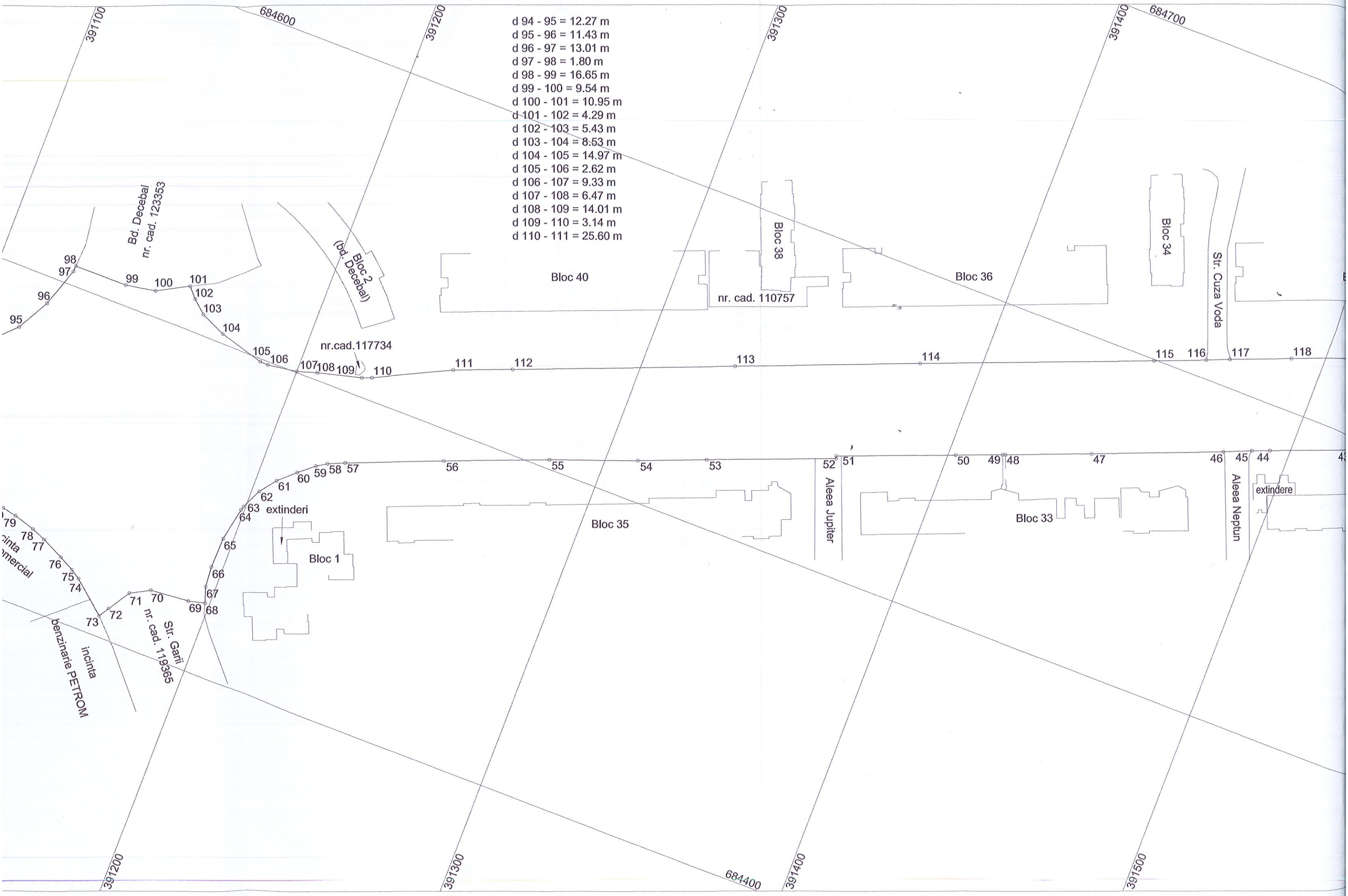
- d 14 - 15 = 2.35 m
- d 15 - 16 = 33.98 m
- d 16 - 17 = 2.16 m
- d 17 - 1 = 0.85 m
- d 18 - 19 = 0.69 m
- d 19 - 20 = 12.95 m
- d 20 - 21 = 32.83 m
- d 21 - 22 = 23.47 m
- d 22 - 23 = 38.31 m
- d 23 - 24 = 37.83 m
- d 24 - 25 = 32.20 m
- d 25 - 26 = 30.16 m
- d 26 - 27 = 31.51 m
- d 27 - 28 = 31.18 m
- d 28 - 29 = 2.34 m
- d 29 - 30 = 69.09 m

d 111 - 112 = 18.56 m  
 d 112 - 113 = 69.64 m  
 d 113 - 114 = 58.30 m  
 d 114 - 115 = 73.35 m  
 d 115 - 116 = 16.39 m  
 d 116 - 117 = 7.42 m  
 d 117 - 118 = 19.41 m  
 d 118 - 119 = 27.43 m  
 d 119 - 120 = 23.85 m  
 d 120 - 121 = 25.60 m  
 d 121 - 122 = 35.24 m  
 d 122 - 123 = 5.81 m  
 d 123 - 124 = 10.25 m  
 d 124 - 125 = 121.65 m  
 d 125 - 126 = 6.61 m  
 d 126 - 127 = 49.30 m  
 d 127 - 128 = 49.94 m  
 d 128 - 129 = 26.86 m



d 30 - 31 = 25.24 m  
 d 31 - 32 = 7.76 m  
 d 32 - 33 = 36.34 m  
 d 33 - 34 = 59.64 m  
 d 34 - 35 = 67.29 m  
 d 35 - 36 = 2.54 m  
 d 36 - 37 = 27.37 m  
 d 37 - 38 = 37.90 m  
 d 38 - 39 = 56.24 m  
 d 39 - 40 = 17.79 m  
 d 40 - 41 = 2.26 m  
 d 41 - 42 = 61.36 m  
 d 42 - 43 = 37.35 m  
 d 43 - 44 = 25.72 m  
 d 44 - 45 = 5.67 m  
 d 45 - 46 = 9.04 m  
 d 46 - 47 = 41.29 m  
 d 47 - 48 = 27.03 m  
 d 48 - 49 = 0.86 m  
 d 49 - 50 = 14.78 m  
 d 50 - 51 = 37.49 m  
 d 51 - 52 = 0.81 m

- d 94 - 95 = 12.27 m
- d 95 - 96 = 11.43 m
- d 96 - 97 = 13.01 m
- d 97 - 98 = 1.80 m
- d 98 - 99 = 16.65 m
- d 99 - 100 = 9.54 m
- d 100 - 101 = 10.95 m
- d 101 - 102 = 4.29 m
- d 102 - 103 = 5.43 m
- d 103 - 104 = 8.53 m
- d 104 - 105 = 14.97 m
- d 105 - 106 = 2.62 m
- d 106 - 107 = 9.33 m
- d 107 - 108 = 6.47 m
- d 108 - 109 = 14.01 m
- d 109 - 110 = 3.14 m
- d 110 - 111 = 25.60 m



Bd. Decebal  
nr. cad. 123353

Bloc 2  
(Bd. Decebal)

nr. cad. 117734

nr. cad. 110757

Str. Garii  
nr. cad. 1193665

benzinarie PETROM

incinta comercial

extindere

Allee Neptun

Allee Jupiter

Str. Cuza Voda

Bloc 34

Bloc 36

Bloc 38

Bloc 40

Bloc 35

Bloc 33

Bloc 1

63 extindere

67

68

69

70

71

72

73

74

75

76

77

78

79

40

41

42

43

44

45

46

47

48

49

50

51

52

53

54

55

56

57

58

59

60

61

62

63

64

65

119

120

121

122

123

124

125

126

127

128

129

130

131

132

133

134

135

136

137

138

139

140

141

142

143

144

145

146

147

148

149

150

151

152

153

154

155

156

157

158

159

160

161

162

163

164

165

166

167

168

169

170

171

172

173

174

175

176

177

178

179

180

181

182

183

184

185

186

187

188

189

190

191

192

193

194

195

196

197

198

199

200

201

202

203

204

205

206

207

208

209

210

211

212

213

214

215

216

217

218

219

220

221

222

223

224

225

226

227

228

229

230

231

232

233

234

235

236

237

238

239

240

241

242

243

244

245

246

247

248

249

250

251

252

253

254

255

256

257

258

259

260

261

262

263

264

265

266

267

268

269

270

271

272

273

274

275

276

277

278

279

280

281

282

283

284

285

286

287

288

289

290

291

292

293

294

295

296

297

298

299

300

684600

684700

684400

391100

391200

391300

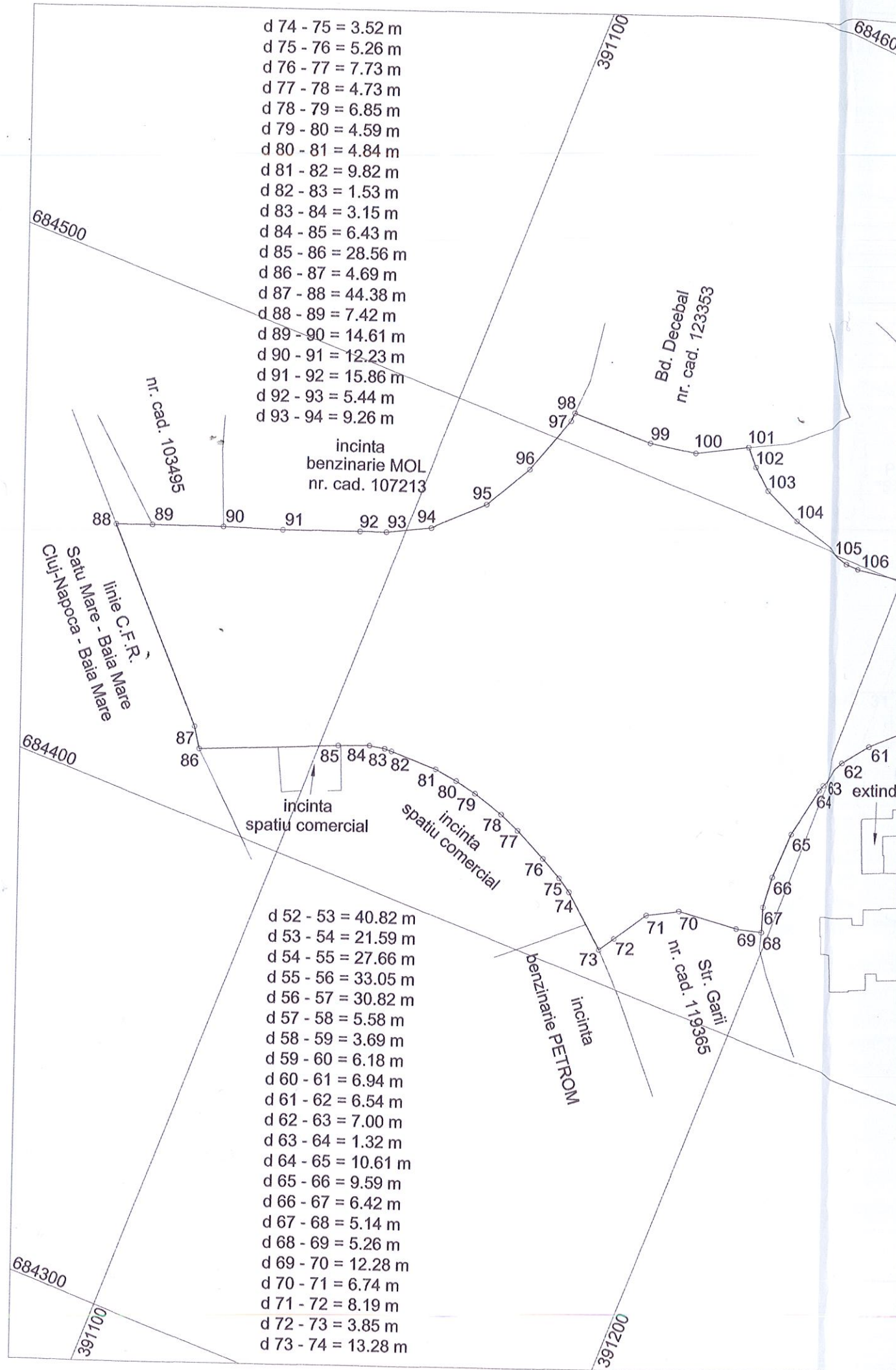
391400

391200

391300

391400

391500



- d 74 - 75 = 3.52 m
- d 75 - 76 = 5.26 m
- d 76 - 77 = 7.73 m
- d 77 - 78 = 4.73 m
- d 78 - 79 = 6.85 m
- d 79 - 80 = 4.59 m
- d 80 - 81 = 4.84 m
- d 81 - 82 = 9.82 m
- d 82 - 83 = 1.53 m
- d 83 - 84 = 3.15 m
- d 84 - 85 = 6.43 m
- d 85 - 86 = 28.56 m
- d 86 - 87 = 4.69 m
- d 87 - 88 = 44.38 m
- d 88 - 89 = 7.42 m
- d 89 - 90 = 14.61 m
- d 90 - 91 = 12.23 m
- d 91 - 92 = 15.86 m
- d 92 - 93 = 5.44 m
- d 93 - 94 = 9.26 m

- d 52 - 53 = 40.82 m
- d 53 - 54 = 21.59 m
- d 54 - 55 = 27.66 m
- d 55 - 56 = 33.05 m
- d 56 - 57 = 30.82 m
- d 57 - 58 = 5.58 m
- d 58 - 59 = 3.69 m
- d 59 - 60 = 6.18 m
- d 60 - 61 = 6.94 m
- d 61 - 62 = 6.54 m
- d 62 - 63 = 7.00 m
- d 63 - 64 = 1.32 m
- d 64 - 65 = 10.61 m
- d 65 - 66 = 9.59 m
- d 66 - 67 = 6.42 m
- d 67 - 68 = 5.14 m
- d 68 - 69 = 5.26 m
- d 69 - 70 = 12.28 m
- d 70 - 71 = 6.74 m
- d 71 - 72 = 8.19 m
- d 72 - 73 = 3.85 m
- d 73 - 74 = 13.28 m

incinta  
benzinarie MOL  
nr. cad. 107213

incinta  
spatiu comercial

incinta  
spatiu comercial

incinta  
benzinarie PETROM

Bd. Decebal  
nr. cad. 123353

Str. Garzii  
nr. cad. 111536365

684500

684400

684300

nr. cad. 103495

linie C.F.R.  
Satu Mare - Baia Mare  
Cluj-Napoca - Baia Mare

684600

61  
62  
63 extinde